



TELESCOPE CYLINDER

WWW.JNHCIC.COM

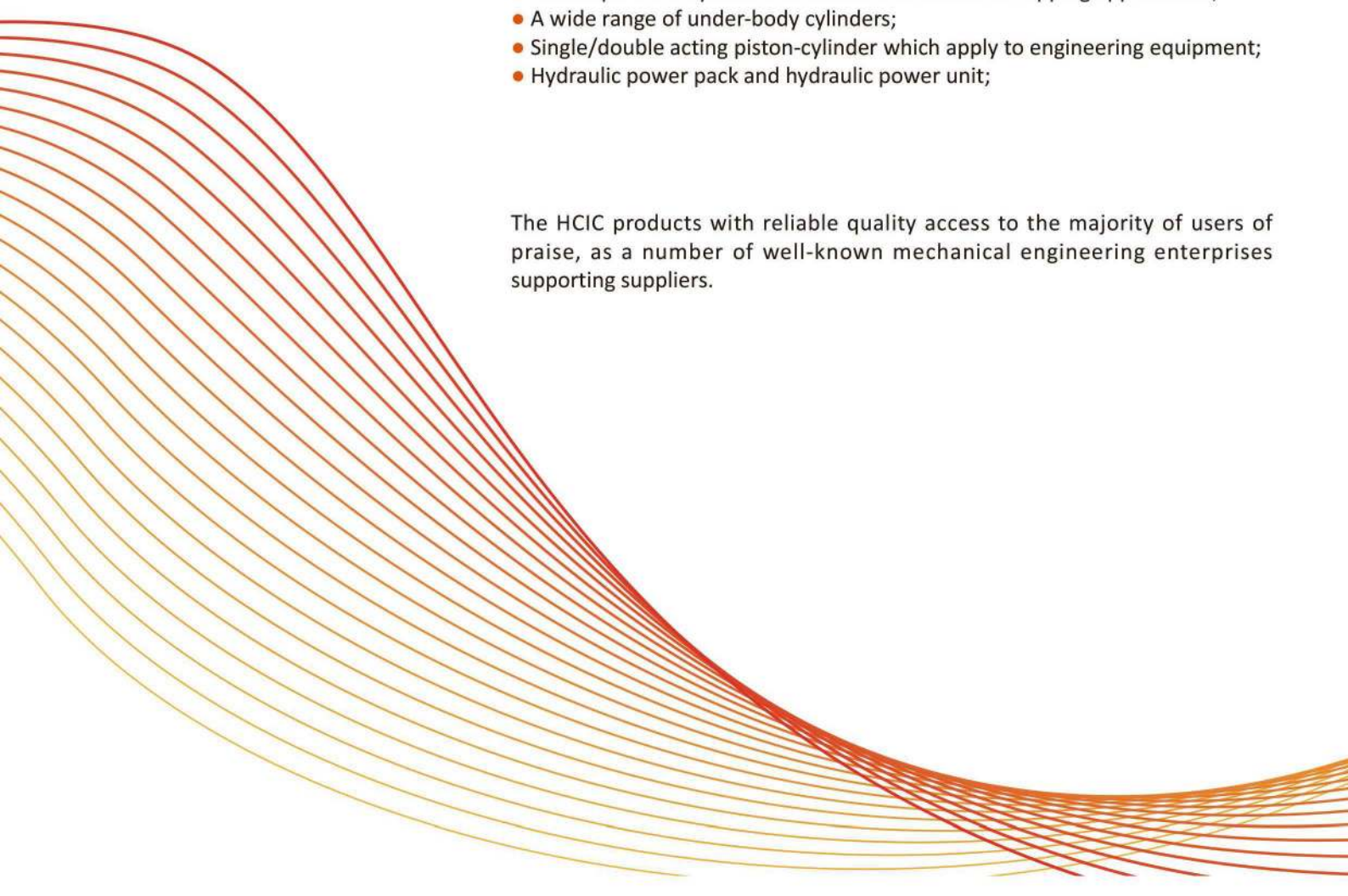
INTRODUCTION

HCIC is a professional hydraulic system exporter company founded in 1998, the company is committed to the design, production and hydraulic transmission systems solutions for different industries. From agriculture to automotive and every industry in between, HCIC products are designed to meet the most demanding requirements. The production line was developed because we understand the need for professional performance and durability.

As a supplier HCIC offers a wide range of technical products and components. HCIC markets and distributes products those are developed and produced by manufacturing facilities across the world. These products include:

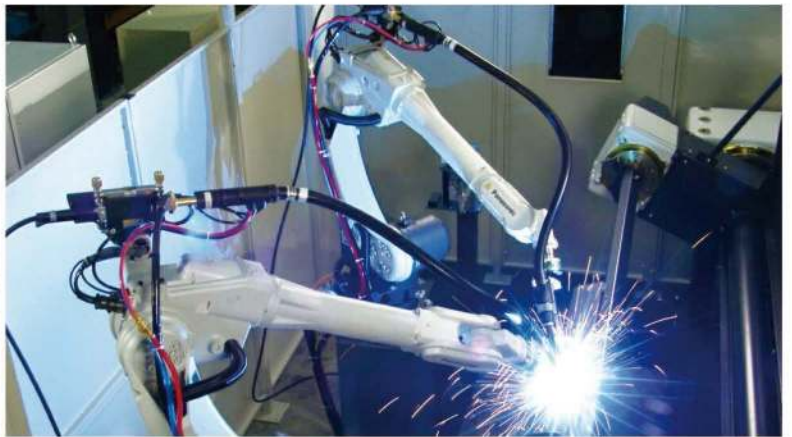
- Telescopic front cylinders for trucks and trailers for tipping applications;
- A wide range of under-body cylinders;
- Single/double acting piston-cylinder which apply to engineering equipment;
- Hydraulic power pack and hydraulic power unit;

The HCIC products with reliable quality access to the majority of users of praise, as a number of well-known mechanical engineering enterprises supporting suppliers.



THE MOST ADVANCED TECHNOLOGY

HCIC has a strong commitment to deliver world class quality products,the production facilities have strict quality control system, advanced production equipment, including KUKA robots, friction welding machine and advanced CNC processing center and etc.





FRONT-END TIPPING SOLUTION

HCIC front end tipping solution with the standard operating pressure up to 250bar, providing best all round performance through the combination of reduced weight, increased tipping speed and the stability required for the application.



OIL TANKS

HCIC supplies different models of steel and aluminium tanks depending on the mounting position required (side or rear of cab). Our tanks are equipped for direct mounting of the proportional tipping valve and of the return line filter. Mounting brackets for various types of chassis are also provided. Capacity up to 250 litres.



GEAR AND PISTON PUMPS

Numerous pump solutions for hydraulic kits:

- Complete range of gear pumps from 15 to 150 cc. Max pressure 340 bar. Max speed 3000 rpm. PTO(power-take-off) adapter available.
- Axial and bent axis piston pumps from 20 to 130 cc. Max pressure 400 bar. Max speed 3000 rpm. PTO(power-take-off) adapter available.



BODYFIX

Connecting the tipper body and the chassis, the body fix prevents damage to the chassis itself, avoiding unnecessary wear and tear to the tipper while traveling unloaded and reducing the noise nuisance.

VALVES

Complete range of HCIC tipping valves and safety valves. Electrically operated tipping valves (for light tippers) and air operated proportional tipping valves for medium – light, medium-heavy and heavy applications.



END-OF-STROKES

Pneumatic and mechanical end-of-strokes for increased safety and greater control of the hydraulic system.



CAB CONTROLS

Air proportional cab controls with integrated lifting/lowering control and with or without PTO(Power-Take-Off) control. Several versions available for meeting any requirements.



REAR CAMERA UNLOADING AND UPLOADING ASSISTANT OPTIONAL

The rear camera display uses a liquid crystal display(LCD) that works with a video camera mounted at the rear of the truck to provide a view directly behind the cab while unloading and uploading.



HOSES AND FITTINGS

Complete range of preassembled high pressure hoses, high pressure fittings, heavy duty quick release couplings, low pressure suction and return hoses. High pressure hose with steel wire ring protection



SEAL KITS

KADEN, HALLITE, NOK, HERCULES etc.

Can bear 40MPa working pressure

Working temperature : -40 degrees to 110 degrees

FRONT - END CYLINDERS

HCIC designs, manufactures and distributes a complete range of front - end cylinders: with cover (FC), top eye (FE) or top and bottom eye (FEE) with lifting 120 tons capacity. Chrome plated for each Tube, Italy imported seals kits .



UNDERBODY CYLINDERS

HCIC designs, manufactures and distributes a complete range of under - body cylinders with all the necessary cradles and supports for tractors and semi - trailers with rear, side or 3 - way tipper, Agriculture trailers. Single or double cylinders. Cradles and supports.

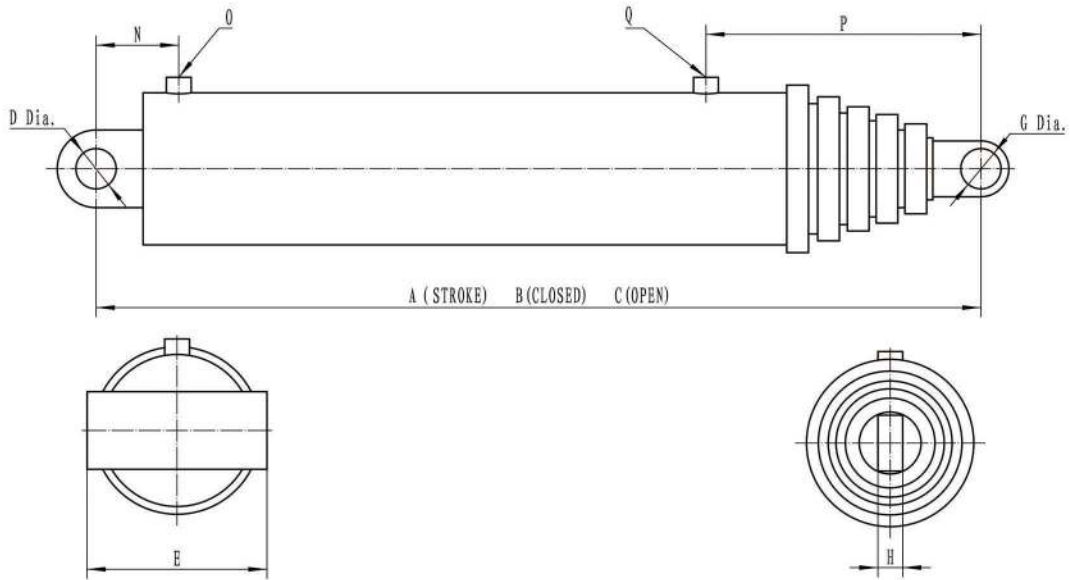


DOUBLE ACTING TELESCOPIC HYDRAULIC CYLINDERS

The double acting telescopic cylinders represent the perfect synthesis between strength, resistance, speed and reliability through technological innovation and customized design systems.



TECHNICAL PARAMETER OF THE DUMP TRUCK TIPPING HOIST



MODEL	THE FIRST STAGE ROD DIAMETER	TOTAL STAGE	A STROKE	B CLOSED LENGTH	C OPEN LENGTH	D	E	G	H	N	O	P	Q
HCIC-5-3-72	5"	3	72" (1829mm)	37.19" (945mm)	109.19" (2773mm)	2" (50.8mm)	7" (178mm)	1.63" (41.4mm)	1.5" (38.1mm)	19.5" (495.30mm)	3/4 NPT		
HCIC-5-3-84	5"	3	84" (2134mm)	41.19" (1046mm)	125.19" (3180mm)	2" (50.8mm)	7" (178mm)	2" (50.8mm)	1.5" (38.1mm)	19.5" (495.30mm)	3/4 NPT		
HCIC-5-3-107	5"	3	107.56" (2732mm)	48.38" (1229mm)	155.94" (3961mm)	2" (50.8mm)	7" (178mm)	1.75" (44.45mm)	2" (50.8mm)			9.94" (252mm)	1 NPT
HCIC-5-3-126	5"	3	126.63" (3216mm)	54.56" (1386mm)	181.19" (4602mm)	2" (50.8mm)	7" (178mm)	1.75" (44.45mm)	2" (50.8mm)			16.12" (409mm)	1 NPT
HCIC-5-3-86	6"	3	86.75" (2203mm)	40.88" (1038mm)	127.63" (3241mm)	2" (50.8mm)	7" (178mm)	2" (50.8mm)	2" (50.8mm)	20.81" (529mm)	1 NPT		
HCIC-6-3-104	6"	3	103.94" (2640mm)	47" (1194mm)	150.94" (3834mm)	2" (50.8mm)	7" (178mm)	2" (50.8mm)	2" (50.8mm)	20.81" (529mm)	1 NPT		
HCIC-6-3-107	6"	3	107.56" (2732mm)	48.38" (1289mm)	155.94" (3961mm)	2" (50.8mm)	7" (178mm)	2" (50.8mm)	2" (50.8mm)	20.81" (529mm)	1 NPT		
HCIC-6-3-111	6"	3	111" (2819mm)	49.94" (1268mm)	160.94" (4087mm)	2" (50.8mm)	7" (178mm)	2" (50.8mm)	2" (50.8mm)	3.81" (96.77mm)	1 NPT	24" (609.6mm)	1 NPT
HCIC-6-3-120	6"	3	120" (3048mm)	53.5" (1359mm)	173.5" (4407mm)	2.38" (60.45mm)	8" (203mm)	2" (50.8mm)	1.5" (38.1mm)	24.91" (632.71mm)	#16 90D SAE		
HCIC-6-3-123	6"	3	123" (3124mm)	54.94" (1395mm)	177.94" (4519mm)	2" (50.8mm)	7" (178mm)	2" (50.8mm)	2" (50.8mm)	3.81" (96.77mm)	1 NPT	24" (609.6mm)	1 NPT
HCIC-6-3-126	6"	3	126.31" (3208mm)	54.56" (1386mm)	180.87" (4594mm)	2" (50.8mm)	7" (178mm)	2" (50.8mm)	2" (50.8mm)	20.81" (528.57mm)	1 NPT		
HCIC-6-3-140	6"	3	140.25" (3562mm)	59.81" (1519mm)	200.06" (5081mm)	2" (50.8mm)	7" (178mm)	2" (50.8mm)	2" (50.8mm)			5.5" (140mm)	1 NPT
HCIC-6-4-135	6"	4	135" (3429mm)	47.19" (1199mm)	182.19" (4628mm)	2" (50.8mm)	7" (178mm)	2" (50.8mm)	2" (50.8mm)				
HCIC-6-4-156	6"	4	156" (3962mm)	53.62" (1362mm)	209.62" (5324mm)	2" (50.8mm)	7" (178mm)	2" (50.8mm)	2" (50.8mm)	6.31" (160.27mm)	1 NPT		
HCIC-7-3-110	7"	3	110.63" (2810mm)	50.06" (1271mm)	160.69" (4081mm)	2" (50.8mm)	8.25" (210mm)	2" (50.8mm)	2" (50.8mm)	7.06" (179.32mm)	1 NPT	4.62" (117.35mm)	1 NPT
HCIC-7-3-120	7"	3	120" (3048mm)	53.12" (1349mm)	173.12" (4397mm)	2" (50.8mm)	8.25" (210mm)	2" (50.8mm)	2" (50.8mm)	7.06" (179.32mm)	1 NPT	4.62" (117.35mm)	1 NPT
HCIC-7-3-124	7"	3	124.88" (3172mm)	54.81" (1392mm)	179.69" (4564mm)	2" (50.8mm)	8.25" (210mm)	2" (50.8mm)	2" (50.8mm)	7.06" (179.32mm)	1 NPT	4.62" (117.35mm)	1 NPT



EMAIL HXL@HUACHEN.CC
WEB WWW.JNHCIC.COM

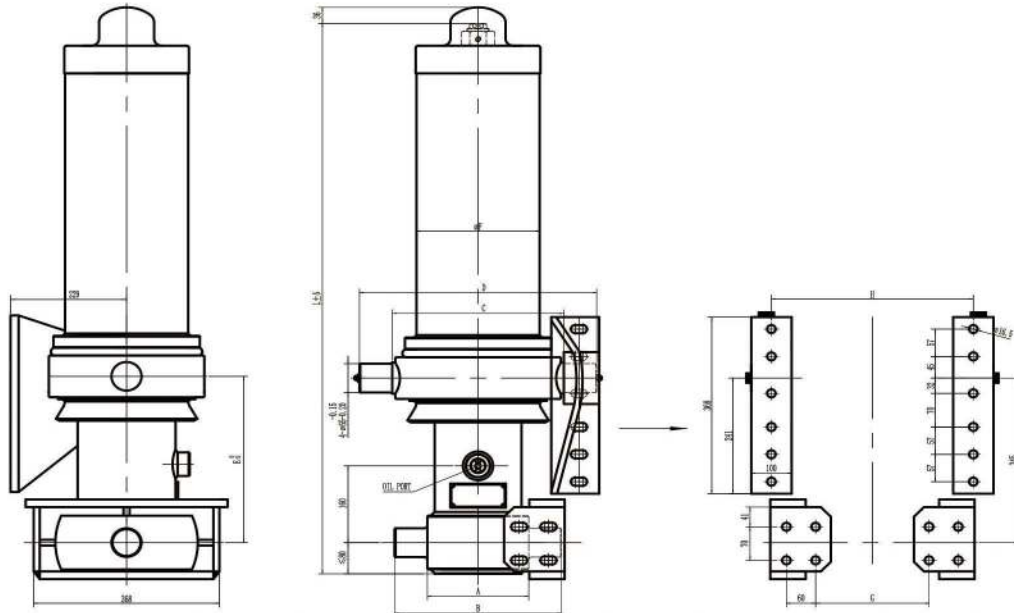
TECHNICAL PARAMETER OF THE DUMP TRUCK TIPPING HOIST

MODEL	THE FIRST STAGE ROD DIAMETER	TOTAL STAGE	A STROKE	B CLOSED LENGTH	C OPEN LENGTH	D	E	G	H	N	O	P	Q
HCIC-7-3-129	7"	3	129" (3277mm)	56.5" (1435mm)	185.5" (4712mm)	2" (50.8mm)	8.25" (210mm)	2" (50.8mm)	2" (50.8mm)	8.56" (217.42mm)	1 NPT	4.62" (117.35mm)	1 NPT
HCIC-7-3-140	7"	3	140.44" (3567mm)	60" (1524mm)	200.44" (5091mm)	2" (50.8mm)	8.25" (210mm)	2" (50.8mm)	2" (50.8mm)	7.06" (179.32mm)	1 NPT	4.62" (117.35mm)	1 NPT
HCIC-7-3-150	7"	3	150" (3810mm)	63.50" (1613mm)	213.50" (5423mm)	2" (50.8mm)	8.25" (210mm)	2" (50.8mm)	2" (50.8mm)	7.06" (179.32mm)	1 NPT	4.62" (117.35mm)	1 NPT
HCIC-7-4-120	7"	4	120" (3048mm)	44.12" (1120mm)	164.12" (4168mm)	2" (50.8mm)	8.25" (210mm)	2" (50.8mm)	2" (50.8mm)	7.06" (179.32mm)	1 NPT	4.62" (117.35mm)	1 NPT
HCIC-7-4-135	7"	4	135" (3429mm)	48.43" (1230mm)	183.44" (4659mm)	2" (50.8mm)	8.25" (210mm)	2" (50.8mm)	2" (50.8mm)	7.06" (179.32mm)	1 NPT	4.62" (117.35mm)	1 NPT
HCIC-7-4-140	7"	4	140" (3556mm)	49.75" (1263mm)	189.75" (4819mm)	2" (50.8mm)	8.25" (210mm)	2" (50.8mm)	2" (50.8mm)	7.06" (179.32mm)	1 NPT	4.62" (117.35mm)	1 NPT
HCIC-7-4-156	7"	4	156" (3962mm)	53.75" (1365mm)	209.75" (5327mm)	2" (50.8mm)	8.25" (210mm)	2" (50.8mm)	2" (50.8mm)	7.06" (179.32mm)	1 NPT	4.62" (117.35mm)	1 NPT
HCIC-7-4-161	7"	4	161.75" (4108mm)	55.31" (1405)	217.06" (5513mm)	2" (50.8mm)	8.25" (210mm)	2" (50.8mm)	2" (50.8mm)	7.06" (179.32mm)	1 NPT	4.62" (117.35mm)	1 NPT
HCIC-7-4-167	7"	4	167" (4242mm)	56.38" (1432mm)	223.38" (5674mm)	2" (50.8mm)	8.25" (210mm)	2" (50.8mm)	2" (50.8mm)	7.06" (179.32mm)	1 NPT	4.62" (117.35mm)	1 NPT
HCIC-7-4-180	7"	4	180" (4572mm)	61.12" (1552mm)	241.12" (6124mm)	2" (50.8mm)	8.25" (210mm)	2" (50.8mm)	2" (50.8mm)	7.06" (179.32mm)	1 NPT	4.62" (117.35mm)	1 NPT
HCIC-8-4-148	8.125"	4	147.75" (3753mm)	51.50" (1308mm)	199.25" (5061mm)	2" (50.8mm)	9.5" (241mm)	2" (50.8mm)	2" (50.8mm)	6.5" (165.10mm)	1 NPT	5.62" (142.75mm)	1 NPT
HCIC-8-4-156	8.125"	4	156" (3962mm)	53.75" (1365mm)	209.75" (5327mm)	2" (50.8mm)	9.5" (241mm)	2" (50.8mm)	2" (50.8mm)	6.5" (165.10mm)	1 NPT	5.62" (142.75mm)	1 NPT
HCIC-8-4-161	8.125"	4	160" (4064mm)	55.75" (1416mm)	215.75" (5480mm)	2" (50.8mm)	9.5" (241mm)	2" (50.8mm)	2" (50.8mm)	6.5" (165.10mm)	1 NPT	5.62" (142.75mm)	1 NPT
HCIC-8-4-170	8.125"	4	170" (4318mm)	57.25" (1454mm)	227.25" (5825mm)	2" (50.8mm)	9.5" (241mm)	2" (50.8mm)	2" (50.8mm)	6.5" (165.10mm)	1 NPT	5.62" (142.75mm)	1 NPT
HCIC-8-4-180	8.125"	4	180" (4572mm)	59.75" (1518mm)	239.75" (6090mm)	2" (50.8mm)	9.5" (241mm)	2" (50.8mm)	2" (50.8mm)	6.5" (165.10mm)	1 NPT	5.62" (142.75mm)	1 NPT
HCIC-8-5-170	8.125"	5	170" (4318mm)	49.88" (1267mm)	219.88" (5585mm)	2" (50.8mm)	9.5" (241mm)	2" (50.8mm)	2" (50.8mm)	6.5" (165.10mm)	1 NPT	5.62" (142.75mm)	1 NPT
HCIC-8-5-190	8.125"	5	189" (4800mm)	54.62" (1387mm)	243.62" (6188mm)	2" (50.8mm)	9.5" (241mm)	2" (50.8mm)	2" (50.8mm)	6.5" (165.10mm)	1 NPT	5.62" (142.75mm)	1 NPT
HCIC-8-5-220	8.125"	5	220" (5588mm)	60" (1524mm)	280" (7112mm)	2" (50.8mm)	9.5" (241mm)	2" (50.8mm)	2" (50.8mm)	6.5" (165.10mm)	1 NPT	5.62" (142.75mm)	1 NPT
HCIC-8-5-235	8.125"	5	234" (5944mm)	64.62" (1641mm)	298.62" (7585mm)	2" (50.8mm)	9.5" (241mm)	2" (50.8mm)	2" (50.8mm)	6.5" (165.10mm)	1 NPT	5.62" (142.75mm)	1 NPT
HCIC-8-5-250	8.125"	5	249" (6325mm)	68.62" (1743mm)	317.62" (8068mm)	2" (50.8mm)	9.5" (241mm)	2" (50.8mm)	2" (50.8mm)	6.5" (165.10mm)	1 NPT	5.62" (142.75mm)	1 NPT
HCIC-8-5-265	8.125"	5	265" (6731mm)	71" (1803mm)	336" (8534mm)	2" (50.8mm)	9.5" (241mm)	2" (50.8mm)	2" (50.8mm)	6.5" (165.10mm)	1 NPT	5.62" (142.75mm)	1 NPT
HCIC-8-5-285	8.125"	5	285" (7239mm)	78.5" (1994mm)	363.5" (9233mm)	2" (50.8mm)	9.5" (241mm)	2" (50.8mm)	2" (50.8mm)	6.5" (165.10mm)	1 NPT	5.62" (142.75mm)	1 NPT
HCIC-9-5-220	9.375"	5	218" (5537mm)	62.44" (1586mm)	280.44" (7123mm)	2" (50.8mm)	10.88" (276mm)	2" (50.8mm)	2" (50.8mm)	6.5" (165.10mm)	1 NPT	5.75" (146.05mm)	1 NPT
HCIC-9-5-235	9.375"	5	233" (5918mm)	65.44" (1662mm)	298.44" (7580mm)	2" (50.8mm)	10.88" (276mm)	2" (50.8mm)	2" (50.8mm)	6.5" (165.10mm)	1 NPT	5.75" (146.05mm)	1 NPT
HCIC-9-5-250	9.375"	5	248" (6299mm)	68.44" (1738mm)	316.44" (8037mm)	2" (50.8mm)	10.88" (276mm)	2" (50.8mm)	2" (50.8mm)	6.5" (165.10mm)	1 NPT	5.75" (146.05mm)	1 NPT
HCIC-9-5-265	9.375"	5	265" (6731mm)	72.62" (1844mm)	337.62" (8575mm)	2" (50.8mm)	10.88" (276mm)	2" (50.8mm)	2" (50.8mm)	6.5" (165.10mm)	1 NPT	5.75" (146.05mm)	1 NPT
HCIC-9-5-280	9.375"	5	280" (7112mm)	72.62" (1997mm)	358.62" (9109mm)	2" (50.8mm)	10.88" (276mm)	2" (50.8mm)	2" (50.8mm)	6.5" (165.10mm)	1 NPT	5.75" (146.05mm)	1 NPT
HCIC-9-5-300	9.375"	5	300" (7620mm)	79" (2007mm)	379" (9627mm)	2" (50.8mm)	10.88" (276mm)	2" (50.8mm)	2" (50.8mm)	6.5" (165.10mm)	1 NPT	5.75" (146.05mm)	1 NPT
HCIC-9-5-320	9.375"	5	320" (8128mm)	83" (2108mm)	403" (9628mm)	2" (50.8mm)	10.88" (276mm)	2" (50.8mm)	2" (50.8mm)	6.5" (165.10mm)	1 NPT	5.75" (146.05mm)	1 NPT
HCIC-9-5-340	9.375"	5	340" (8636mm)	87" (2210mm)	427" (10846mm)	2" (50.8mm)	10.88" (276mm)	2" (50.8mm)	2" (50.8mm)	6.5" (165.10mm)	1 NPT	5.75" (146.05mm)	1 NPT



EMAIL HXL@HUACHEN.CC
WEB WWW.JNHCIC.COM

TECHNICAL PARAMETER OF THE DUMP TRUCK TIPPING HOIST

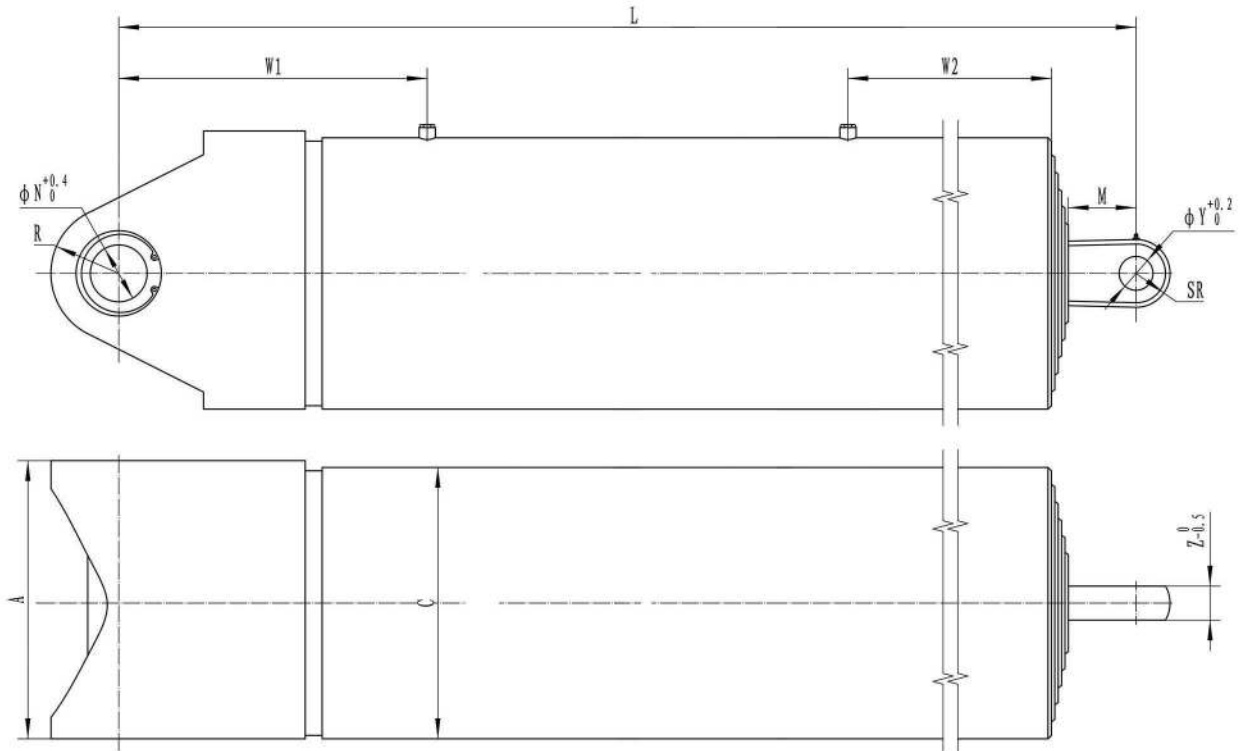


MODEL	LIFTING WEIGHT (ton)	PRESSURE (MPa)	A (mm)	B (mm)	C (mm)	D (mm)	E (mm)	F (mm)	L (mm)	G (mm)	H (mm)
4TG-E149*4280	28.3	16	245	385	360	490	325	272	1450	195±10	410±10
5TG-E149*4280	28.3	16	245	385	360	490	325	272	1195	195±10	410±10
4TG-F169*4280	49	20	245	385	360	490	325	272	1460	195±10	410±10
4TG-F169*4650	49	20	245	385	360	490	325	272	1555	195±10	410±10
4TG-F169*5000	49	20	245	385	360	490	325	272	1645	195±10	410±10
4TG-F169*5390	49	20	245	385	360	490	325	272	1740	195±10	410±10
4TG-F169*5700	49	20	245	385	360	490	325	272	1820	195±10	410±10
5TG-F169*4280	49	20	245	385	360	490	325	272	1195	195±10	410±10
5TG-F169*5000	49	20	245	385	360	490	325	272	1355	195±10	410±10
5TG-F169*5390	49	20	245	385	360	490	325	272	1455	195±10	410±10
5TG-F169*5700	49	20	245	385	360	490	325	272	1500	195±10	410±10
4TG-F172*4650	54.8	20	245	385	360	490	325	272	1560	195±10	410±10
4TG-F172*5000	54.8	20	245	385	360	490	325	272	1645	195±10	410±10
4TG-F172*5390	54.8	20	245	385	360	490	325	272	1740	195±10	410±10
4TG-F172*5700	54.8	20	245	385	360	490	325	272	1820	195±10	410±10
4TG-F172*6000	54.8	20	245	385	360	490	325	272	1890	195±10	410±10
4TG-F172*6180	54.8	20	245	385	360	490	325	272	1935	195±10	410±10
5TG-F172*4280	54.8	20	245	385	360	490	325	272	1195	195±10	410±10
5TG-F172*5000	54.8	20	245	385	360	490	325	272	1355	195±10	410±10
4TG-F191*6000	64	20	270	410	360	490	325	272	1900	220±10	410±10
5TG-F191*6500	64	20	270	410	360	490	325	272	1630	220±10	410±10
4TG-F169*4280HV	49	20	245	385	340	470	325	244	1460	195±10	410±10
4TG-F169*4650HV	49	20	245	385	340	470	325	244	1555	195±10	410±10
4TG-F169*5390HV	49	20	245	385	340	470	325	244	1740	195±10	410±10
4TG-F191*5700HV	64	20	270	410	360	490	325	272	1825	220±10	410±10
4TG-F191*6000HV	64	20	270	410	360	490	325	272	1900	220±10	410±10
4TG-F191*6180HV	64	20	270	410	360	490	325	272	1945	220±10	410±10



EMAIL HXL@HUACHEN.CC
WEB WWW.JNHCIC.COM

TECHNICAL PARAMETER OF THE DUMP TRUCK TIPPING HOIST

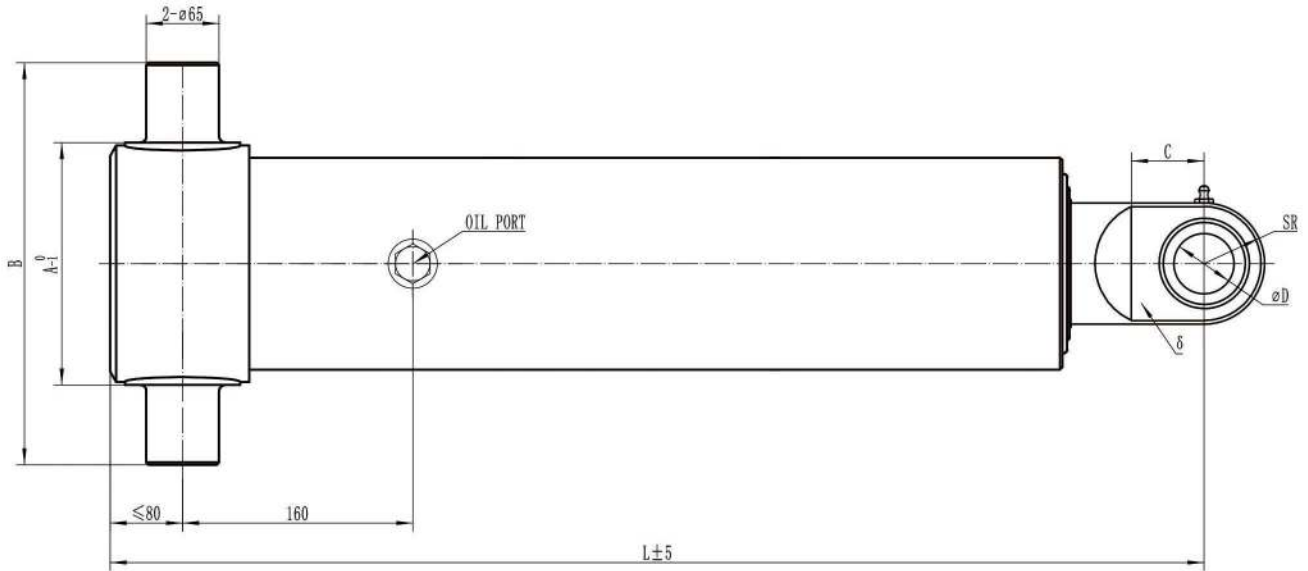


MODEL	LIFTING WEIGHT (ton)	PRESSURE (MPa)	DIAMETER AT LEVELS(mm)	A (mm)	C (mm)	N (mm)	Y (mm)	Z (mm)	M (mm)	P	L (mm)
FEE-5TG-E191*4826	51.3	16	200/175/152/130/110	245	231	52.3	52.3	42	60	SAE16	1357
FEE-5TG-E191*5588	51.3	16	200/175/152/130/110	245	231	52.3	52.3	42	60	SAE16	1524
FEE-5TG-E191*5969	51.3	16	200/175/152/130/110	245	231	52.3	52.3	42	60	SAE16	1585
FEE-5TG-E191*6477	51.3	16	200/175/152/130/110	245	231	52.3	52.3	42	60	SAE16	1700
FEE-5TG-E191*6883	51.3	16	200/175/152/130/110	245	231	52.3	52.3	42	60	SAE16	1760
FEE-5TG-E191*7137	51.3	16	200/175/152/130/110	245	231	52.3	52.3	42	60	SAE16	1819
FEE-5TG-E191*5780	51.3	16	200/175/152/130/110	245	231	50	50	42	70	NPT1	1550
FEE-3TG-E110*2755	15.5	16	110/90/70	168	132	51	50	42	70	NPT1	1304
FEE-4TG-E149*3680	29.6	16	152/110/90/70	219	178	50	50	42	70	NPT1	1304



EMAIL HXL@HUACHEN.CC
 WEB WWW.JNHVIC.COM

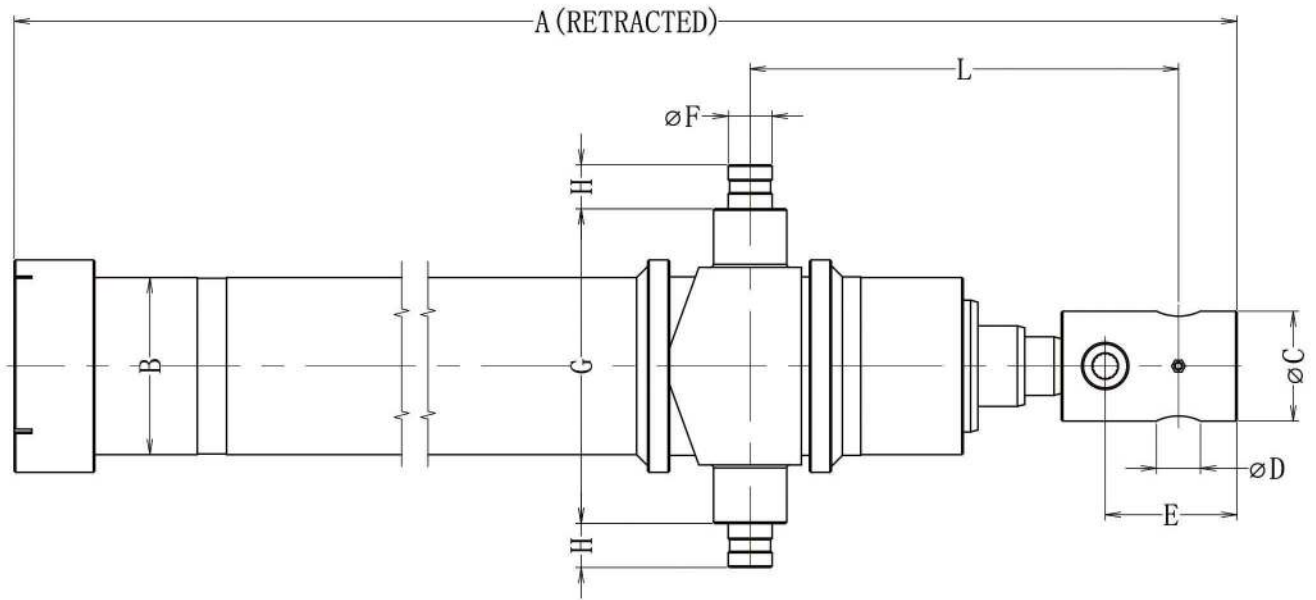
TECHNICAL PARAMETER OF THE DUMP TRUCK TIPPING HOIST



MODEL	LIFTING WEIGHT (ton)	PRESSURE (MPa)	DIAMETER AT ALL LEVELS (mm)	A (mm)	B (mm)	C (mm)	D (mm)	δ (mm)	L (mm)
FE-3TG-E149*3880	28.3	16	158/136/115	201	331	135	50	42	1697
FE-3TG-E149*4090	28.3	16	158/136/115	201	331	135	50	42	1732
FE-4TG-E149*4280	28.3	16	158/136/115/95	245	385	70	50	50	1345
FE-4TG-E149*4650	28.3	16	158/136/115/95	201	331	100	50	42	1546
FE-4TG-E149*4940	28.3	16	158/136/115/95	201	331	100	50	42	1499
FE-4TG-E169*4280	49	16	169/158/136/115	245	385	70	50	50	1345
FE-4TG-E169*4620	49	16	169/158/136/115	245	385	70	50	50	1479
FE-4TG-E169*5180	49	16	169/158/136/115	245	385	70	50	50	1604
FE-5TG-E169*5780	49	16	169/158/136/115/95	245	385	70	50	50	1559
FE-5TG-E169*6180	49	16	169/158/136/115/95	245	385	70	50	50	1505
FE-6TG-E169*6060	49	16	169/158/136/115/95/70	245	385	70	50	50	1240
FE-6TG-E169*6060	49	16	169/158/136/115/95/70	245	385	70	50	50	1240
FE-5TG-E191*6180	64	16	191/169/158/136/115	270	400	100	50	42	1497
FE-5TG-E191*6350	64	16	191/169/158/136/115	270	400	100	50	42	1673



TECHNICAL PARAMETER OF THE DUMP TRUCK TIPPING HOIST

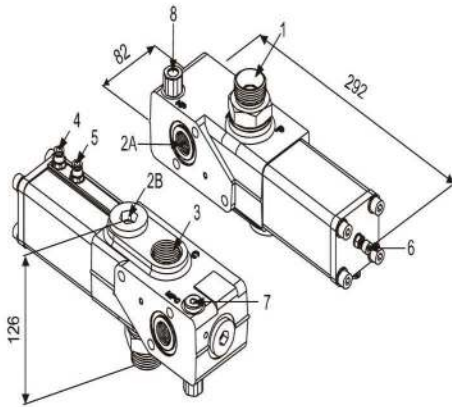


MODEL	LIFTING WEIGHT (ton)	STROKE	A	B	C	D	E	F	G	H	L	OIL PORT
HCIC-07833	7	78"	35.5"	3.75"	2"	1.063"	3.0"	1.25"	6.5"	1.25"	7"	SAE #8(3/4-16UNF)
HCIC-09033	7	90"	39.5"	3.75"	2"	1.063"	3.0"	1.25"	6.5"	1.25"	7"	
HCIC-10833	7	108"	45"	3.75"	2"	1.063"	3.0"	1.25"	6.5"	1.25"	7"	
HCIC-07843	12	78"	34.75"	4.4"	2"	1.063"	3.0"	1.5"	7.5"	1.5"	7"	SAE #8(3/4-16UNF)
HCIC-09043	12	90"	38.75"	4.4"	2"	1.063"	3.0"	1.5"	7.5"	1.5"	7"	
HCIC-10843	12	108"	44.75"	4.4"	2"	1.063"	3.0"	1.5"	7.5"	1.5"	7"	
HCIC-12043	12	120"	48.75"	4.4"	2"	1.063"	3.0"	1.5"	7.5"	1.5"	7"	
HCIC-14443	12	144"	56.78"	4.4"	2"	1.063"	3.0"	1.5"	7.5"	1.5"	7"	



EMAIL HXL@HUACHEN.CC
 WEB WWW.JNHVIC.COM

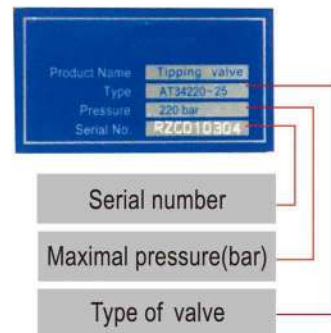
LIFTING VALVE



- 1: PUMP CONNECTOR
- 2A: TANK OIL RETURN PORT
- 2B: SPARE TANK OIL RETURN PORT
- 3: TANK CONNECTOR
- 4: PNEUMATIC CONTROL VALVE /LIFTING CONNECTOR
- 5: PNEUMATIC CONTROL VALVE /LIFTING CONNECTOR
- 6: REGULATING VALVE OF FALLING SPEED
- 7: PRESSURE GAUGE CONNECTOR
- 8: OVERFLOW VALVE

TECHNICAL SPECIFICATIONS

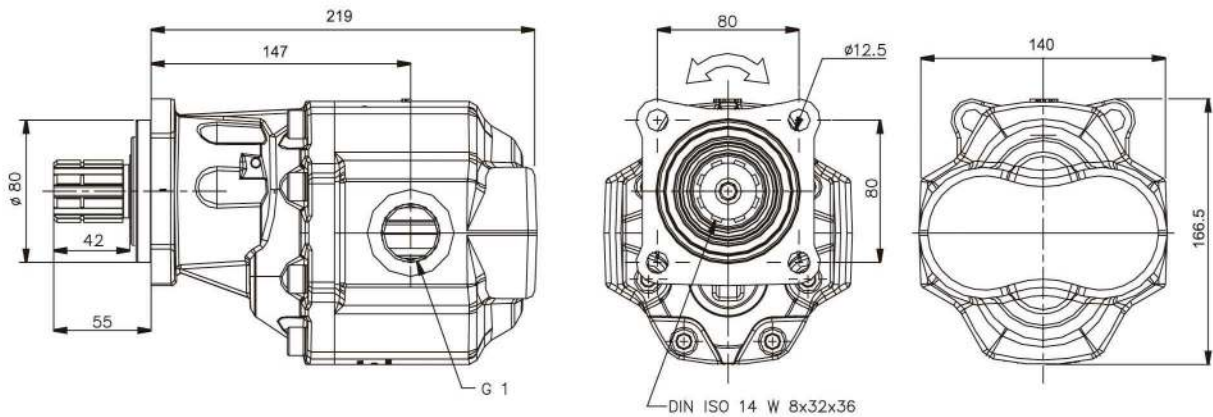
TYPE:	TIPPING VALVE
HYDRAULIC TUBE CONNECTOR:	G1"
MAXIMAL PRESSURE:	350BAR
PNEUMATIC PRESSURE:	6-10BAR
MAXIMAL DISCHARGE:	220L/MIN
THE HIGHEST PRESSURE OF T TUBE:	150BAR
FILTER PRECISION:	≤25MM
RANGE OF HYDRAULIC OIL VISICOSITY:	12-100MM ² /S
RANGE OF HYDRAULIC OIL TEMPERATURE:	-25°C~+80°C
WEIGHT:	6.4KG



STEM CHROME

1. INCREASE THE WEAR RESISTANCE OF THE STEM SURFACE, PROLONG THE SERVICE LIFE.
2. TO IMPROVE THE CORROSION RESISTANCE OF THE STEM.
3. TO INCREASE THE SURFACE FINISH OF THE VALVE STEM.

GEAR PUMP



TECHNICAL SPECIFICATIONS

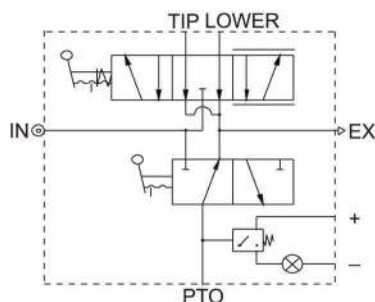
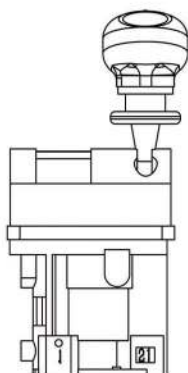
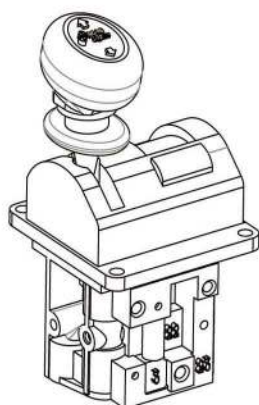
DISPLACEMENT:	81.7CM ³ /R
THE HIGHEST PEAK PRESSURE:	300BAR
THE HIGHEST INTERMITTENT PRESSURE:	220BAR
THE HIGHEST CONTINUOUS PRESSURE:	200BAR
MAXIMAL SPEED UNDER INTERMITTENT PRESSURE:	2500R/MIN
MINIMAL SPEED UNDER INTERMITTENT PRESSURE:	300R/MIN
RANGE OF WORKING TEMPERATURE:	-25°C~+80°C
WORKING HYDRAYLIC OIL VISCOSITY RANGE:	9~200MM ² /S
FILTER PRECISION:	≤25MM
WEIGHT:	16.8KG



EMAIL HXL@HUACHEN.CC
 WEB WWW.JNHIC.COM

PNEUMATIC VALVE

STRUCTURE OF PNEUMATIC VALVE



tip	spring	8766 0181 0181 8766
lower	fixed	
pto	auto	

- power take-off port
- Lower position self-fixed
- Lifting position auto-reset
- Code number



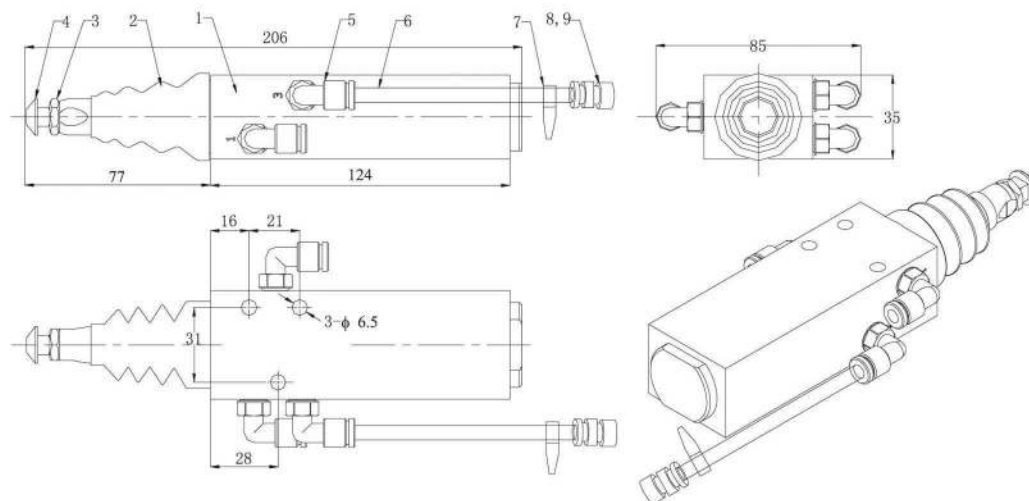
TECHNICAL SPECIFICATIONS

1. PNEUMATIC VALVE IS TWO-WAY OPERATION VALVE, LIFTING, FALLING AND STOP FUNCTION.
2. WHEN IN USE OF PROPORTIONAL DEVLINING HYDRAULIC VALVE, FALLING SPEED OF THE CABINE CAN BE CONTROLLED BY THE ROTATION ANGLE OF PNEUMATIC VALVE CONTROLLING ROD.
3. EASY TO BE INSTALLED IN THE DRIVER CAB.



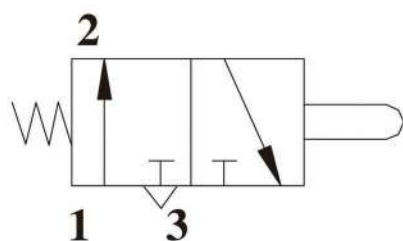
EMAIL HXL@HUACHEN.CC
WEB WWW.JNHCIC.COM

LIMIT VALVE



TECHNICAL SPECIFICATIONS

MAXIMAL PRESSURE: 10BAR
 MINIMAL PRESSURE: 5BAR
 RANGE OF WORKING TEMPRATURE: -20°C~+20°C
 HOSE SIZE: 6MM
 ADJUSTING RANGE OF SCREW: 10MM



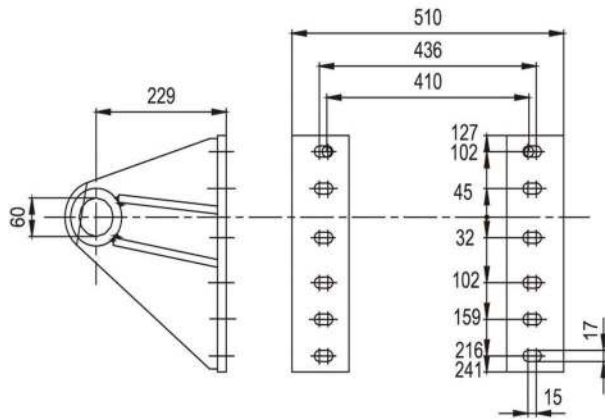
PRINCIPLE

1.AIR INLET
 2.AIR OUT LET
 3.VENT PORT

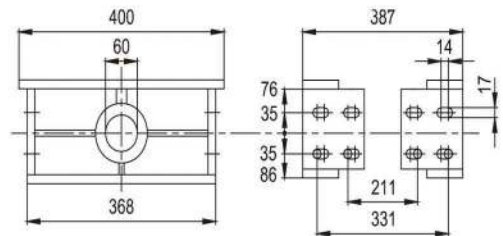


BRACKET

HOISING BRACKET



CHASSIS BRACKET



FUEL TANK ASSEMBLY



FUELTANK ACCESSORIES



AIR FILTER



FUEL TANK LEVEL GAUGE



BALL VALVE



UNION ELBOW



STRAIGHT UNION JOINT

OPERATION AND MAINTENANCE OF DUMP TRUCK HYDRAULIC SYSTEM

1. General requirements of standard operation and maintenance

1.1 General instruction

- 1) All HCIC cylinders are only applied as lifting function and can not be applied as other function. No matter under what kind of condition, the cylinders can not be applied as supporting function.
- 2) No matter under what kind of circumstances, over loading or unbalance loading is forbidden. As under overloading or unbalance loading condition, cylinder working is quite dangerous.
- 3) When lifting, the hydraulic cylinders tube cannot be exposed in the air more than 2 hours. (In damp atmosphere the time cannot exceed 30 minutes.)

1.2 Safe lifting

Improper operation of dump truck is dangerous. And it may cause accident. In order to present the best results of the cylinders, please follow the operation below

1.2.1 Secure utilization environment

- 1) Before arrive at the location, please contact with products relevant person in charge, and obey site operations.
- 2) When driver thinks it is secure, cargo could be loaded or unloaded. When discharging the cargo, driver is responsible of the vehicle safety.
- 3) When different idea happens with applicator, please contact with your employer. When the vehicle is prone to rollover, lifting and unloading is Prohibited.
- 4) When working location surface is unclear, unloading is prohibited.
- 5) Ensuring the land of vehicle working area is stable.
- 6) Keep the vehicle remain level. You would better do no lift when go down hilling. When semi-trailer or trailer vehicle lifting, keep the driver and the trailer on one line.
- 7) When the cabin is under lifting or hoisting condition, any worker must not stand at or walk around working location. When the vehicle is in the lifting condition, the operator can not leave away from the operation site.
- 8) The operators need to watch out the barrier, especially above the vehicle, do not depend on the site worker to indicate the barrier.
- 9) Please pay attention to the sidewind, the influence of the big wind would result the vehicle rollover.
- 10) Make sure that the loading cabin is in balance condition.
- 11) Ensure proper axle loading, in prevention of rollover. If the loading is too near of the front, this will cause the hydraulic system overloaded.
- 12) When the vehicle is loading or stand beside loading area, anybody could not stand on the cabin.

1.2.2 Proper operations

- 1) When vehicle gears up, do not connect with the power take-off. After lifting, power take-off must be separated from the gearbox
- 2) When lifting, do not let the engine move too fast, pump's over speeding will result in the burning of pump as lack of oil
- 3) Make sure that the back door is open before cabin is lifting up within 10 degree.
- 4) Before clean any barrier in the cabin, please drop down the cabin. If the loading cargo is higher than back door, please ensure that the cargo can not lock the back door. As the over loading of the vehicle tail could cause the rollover.
- 5) Before the lifting loading is enough supported, do not stand beneath the lifting loading.
- 6) Some cargo is adapted to freezing when encountering coldness and the cargo is easily stuck at one side of the vehicle. So watch out of the roll-over of the vehicle.
- 7) Pay attention to the unbalanced cargo in result of rollover of the vehicle, as the cargo density is uneven.
- 8) When the cargo cabin falls back to the position, please keep the pneumatic rod at the declining position for 30 seconds, and then adjust the rod to the stop position. When the pneumatic rod is at declining position, do not drive the vehicle.
- 9) When unloading, please do not apply the reverse gear. The reverse rotation of power take-off unit and the oil pump will cause the damage to the oil pump and oil seal.
- 10) When lifting up heavy loading, do not fall back too fast.
- 11) Keep the loading cabin clear, after unloading. Before falling down the loading cabin and locking up the back door, please do not start the vehicle. When unloading the stick cargo, do not utilize the method of lifting, driving the vehicle, and then braking the vehicle to unload.

1.2.3 Hazard disposing

- 1) When the cabin or vehicle touches high voltage power lines, you need to jump down the vehicle, and dial the emergency phone number.
- 2) And do not touch the ground and the vehicle at the same time, or the close circuit will result in heavy injury or death. And before shutting off the power, anybody could not return to the vehicle.
- 3) If the lifting angle has reached at 25 degree and the cargo is still in the loading cabin, please check out whether the cargo is stick with the vehicle. When walking at the back of the vehicle, watch out of the cargo.
- 4) If you think the vehicle is prone to fall over, please stop lifting up the loading cabin, and check the vehicle.
- 5) If you think the vehicle is starting to fall over, just stay at the operating cabin which is safest place, keep your back at the chair and hold the steering wheel tightly. Never jump out of the fallingover vehicle.

**Please take care of your dump truck!
Maintenance is the safest investment!**

QUALITY WARRANTY CLAUSE FROM HCIC

Dear customers, we appreciate that you have chosen our company products. To ensure your rights, and provide our best services to you, our company will undertake quality responsibility as below:

1.1 We will take responsibility on products as follow:

- 1).HCIC hydraulic cylinder;
- 2).HCIC cylinder pump;
- 3).HCIC lifting valve and pneumatic valve;
- 4).HCIC fuel tank;

1.2. Under below circumstances, we will not take responsibility of the products parts:

- 1). Wearing parts, sealing parts, rubber products, air filter, return oil filter core, or other easily damaged parts are not included in the warranty period.
- 2). Paint coating;
- 3). Products damage made by customer themselves who can not follow the manual to operate and maintain;
- 4). Products damage made by customer themselves who does not follow the manual to install or improperly set up;
- 5). Overuse of products;
- 6). Maintain themselves or authorize other company to repair damage parts. (Not repaired in our authorized repairing stores)
- 7). Damage caused by Force Majeure.

1.3. Quality guarantees time:

- 1).Within 12 months, since purchasing it.
- 2).Within 18 months, since products manufactured from HCIC
- 3).Or some circumstances in detailed:
Cylinder tube, lifting valve, pneumatic valve are lifted within 20000 times;
Cylinder pump works within 300 hours;
Fuel tank: Vehicle travels within 100000 kilometers.
- 4).Quality guarantee period is determined by the first date expired explained above.

2. Customer claim:

- 1). Conditions of claiming;
- 2) Customer needs to follow our company procedures to claim;
- 3) Keep the broken parts to in exchange of the new ones in accordance with our company requirements.
3. Range of warranty claim

3.After confirmation of claim from our company, our company will provide services as follow:

- 1)Provide with required parts in repairing;
- 2)Cover relevant repairing fees;
- 3)Exchange parts beyond repairing.

Our company has the final decision right to decide if the claim which is proposed by customers is under requirements. HCIC has the final explanation right.

Reminding clause:

Before purchasing the product, I have read closely all contents about warranty terms. I would like to accept the requirements and follow instruction, and enjoy products service.



ADD: RM603 Xinsheng BD2 No.1299, Xinluo RD, Gaoxin Zone, JINAN, SHANDONG, CHINA

TEL: +0086-53187109766 +0086-53187101088 +0086-53187108088 +0086-15376198599

EMAIL: hxl@huachen.cc

Wechat: [+8615966059063](https://www.wechat.com/qrcode?qr=+8615966059063)

Whatsapp: [+008615966059063](https://www.whatsapp.com/q/008615966059063)

Facebook: [@HCIC](https://www.facebook.com/HCIC)

www.jnhcic.com